

State of Wyoming Corner Record

(In compliance with the CORNER PERPETUATION AND FILING ACT, Wyoming Statutes, 1977, Section 36~11~101, et, seq., and the Rules and Regulations of the Board of Registration for Professional Engineers and Professional Land Surveyors)

The Reverse side of this form may be used if more space is needed.

The record of the original survey and the citation of the source of historical information (if the corner is lost or obliterated) The description of the corner monumentation evidence as found and/or monument and accessories established to perpetuate the location of this corner. A sketch of the relative location of the monument, accessories, and reference points with course and distance to the adjacent corner(s) (if determined in this survey). The method and rationale for reestablishment of the lost or obliterated corner.

GLO Notes: No 1/16th corners set during original survey.

Set 5/8"x36" Rebar with a two and one half inch diameter Aluminum Cap marked CS 1/16.

LARAMIE COUNTY CLERK
APR 21 1997
CHEYENNE, WY.

APR 10 1997

202398

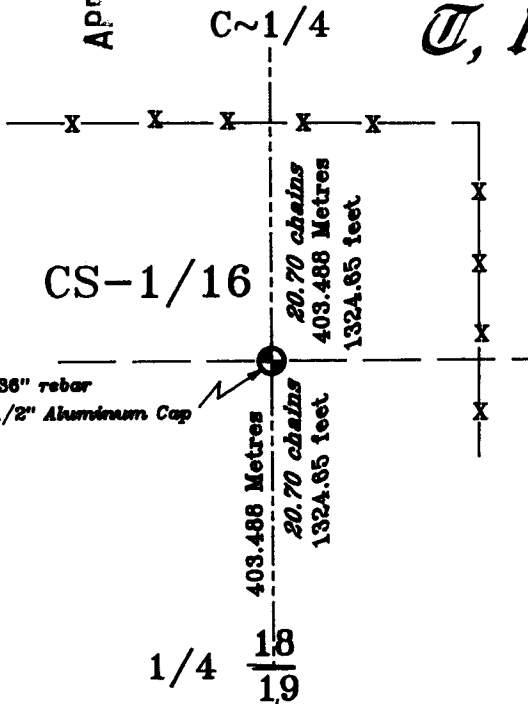
APR 21 1997

CS ~ 1/16

Section 18

T. 15 N. R. 66 W.

6th P.M.

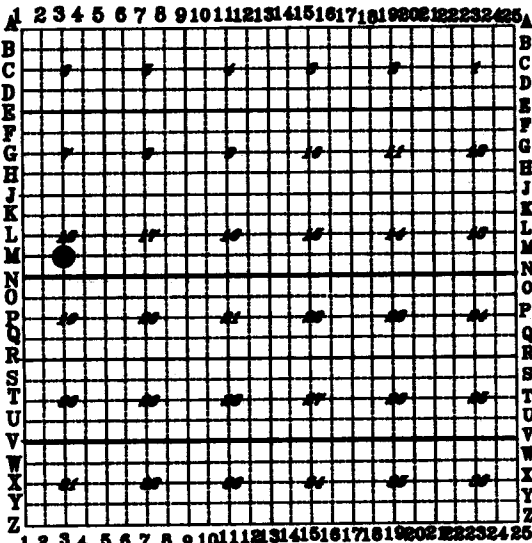


Note: This Monument was Not tied to Any fences or fence corners because the fences shall be moved to fit the Monumentation.

Date of Field Work: 15 Apr 97

Office Reference: _____

Gross Index Diagram



Terrestrial Surveying & Mapping Co.

1127 Terry Ranch Road Cheyenne, Wyoming 82007

Phone: (307) 634-9360

This corner record was prepared by me or under my direct supervision.

Seal and Signature



Corner Name: CS 1/16 Section: 18 T. 15 N. 66 W. P.M. Cross Index No.: M-3